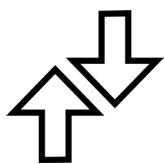
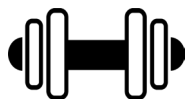


Height Adjustable Wall Mount (HAWM2)

Saves valuable classroom floor space and can also accommodate students with different physical abilities and needs.



Electric lift function
with a 17" range



Supports up to 86"
flat panels with
a maximum
weight of 250lbs



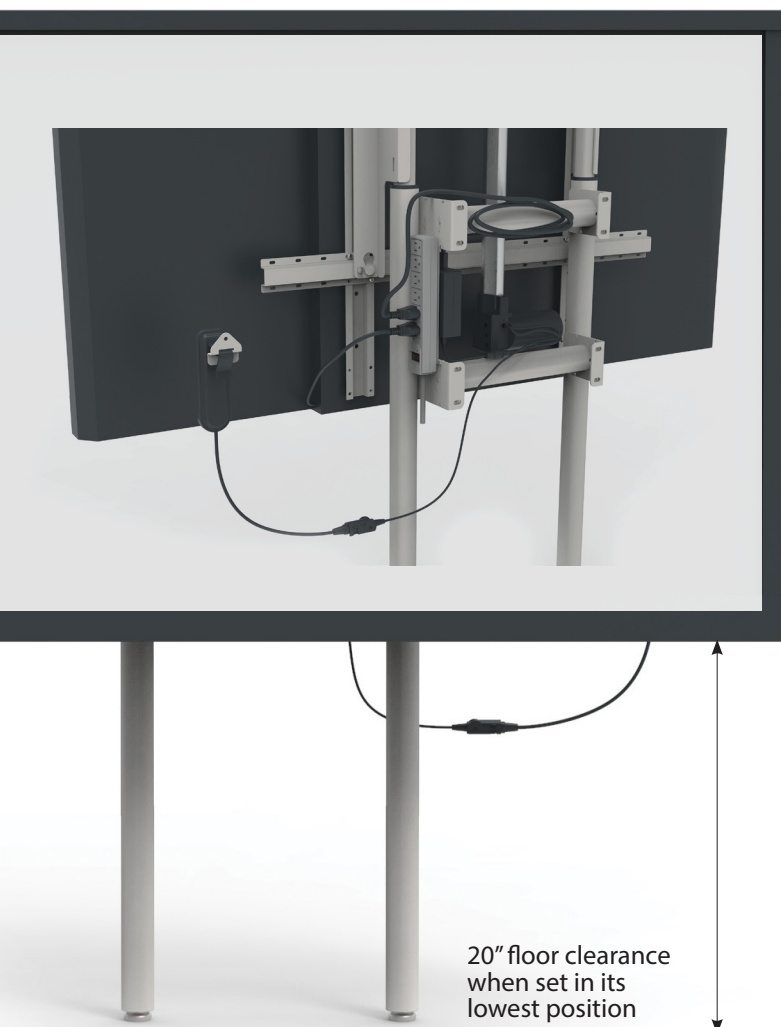
Lifetime warranty
(5 year warranty on
electric lift)



Dimensions
(without flat panel):
78 1/2" H x 35 1/4" W x 8" D



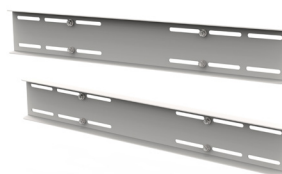
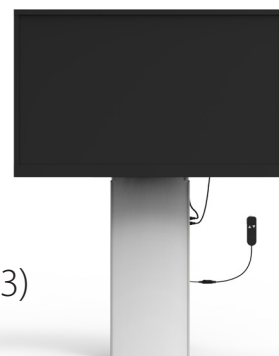
Reduces waste that might
have gone to a landfill.
Packaging: 100% plastic-free!



NEW

Height Adjustable Wall Mount with Frame Cover (HAWM3)

Model also available with
frame cover to conceal cords
and frame.



Stud Mounting Kit for Height Adjustable Wall Mount (HAWM2-SMK)

These steel brackets, specifically made for our Height Adjustable Wall Mount (HAWM2) facilitate the mounting of our iRover2 Carts for Interactive Flat Panels (IFP500) to wood stud walls.

NEW Conversion Kit for Height Adjustable Wall Mount (HAWM2-CK)

By reusing parts of the iRover2® Cart for Interactive Flat Panels, this conversion kit costs less than a brand-new height-adjustable wall mount.

Educators can also use this design example to teach students a lesson about circular economies and their impact on the environment.

NEW Conversion Kit for Height Adjustable Wall Mount with **Frame Cover** (HAWM3-CK)

